



Center for
Children
and Youth

ParentsPlace

14th Annual Private Elementary SCHOOL FAIR

September 29, 2024

centerforchildrenandyouth.org

PARENTS PLACE IS A PROGRAM OF THE CENTER FOR CHILDREN AND YOUTH,
A DIVISION OF JEWISH FAMILY AND CHILDREN'S SERVICES

CARE BEYOND COMPARE



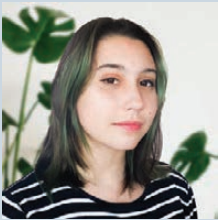
Rimma Hisen



Maggie Berkshire



Diohonne Vargis



Alexandra Hisen

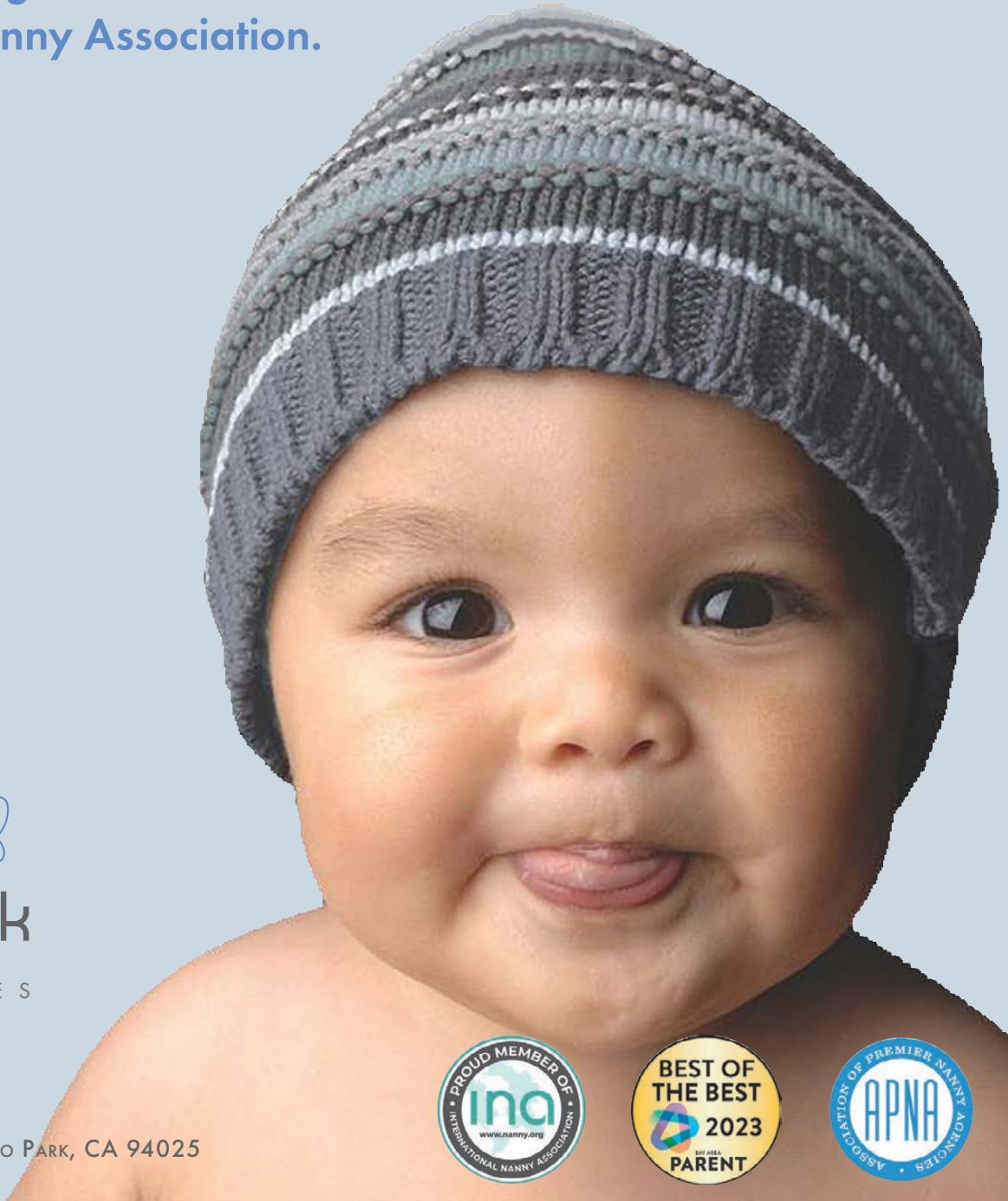
For 27 years, Stanford Park Nannies has been a trusted source for matching families and professional childcare providers in the Bay Area.

Never stepping down from gold-standard service, our agency has received many awards and has been recognized by Bay Area Parenting Magazine and the American Premier Nanny Association.



WWW.SPNANNIES.COM
(650) 462-5485

713 SANTA CRUZ AVE, SUITE 1, MENLO PARK, CA 94025



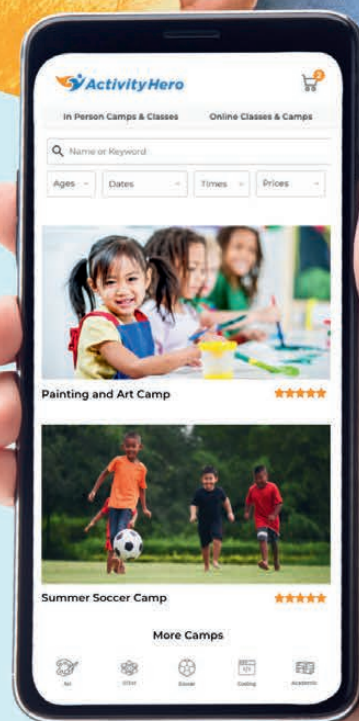


ActivityHero

Your One Stop Family Destination

- ✓ Private School Information
- ✓ Summer & School Holiday Camps
- ✓ Enrichment Classes
- ✓ Local Family Events
- ✓ and More!

USE CODE: **SCHOOL20** TO GET **\$20 OFF!**



4,000,000+
Families
Served



10,000+
Schools, Camps
& Classes



15,000+
Reviews
Nationwide



Scan Me to find
Private Schools &
Kids Activities
Near You

activityhero.com

Offer applies to your first purchase of \$30 or more on ActivityHero.com. Sign up online at activityhero.com and enter code SCHOOL20 at checkout to take advantage of this offer. Not redeemable for cash or credit. Cannot be combined with any other offer or used for past purchases. ActivityHero reserves the right to change or cancel this promotion at any time.



Center for
Children
and Youth

ParentsPlace



Services provided by Stephanie:

- Parent Consultations
- School Observations
and Consultations
- Preschool and School Selection
- Parent Education Workshops
- Teacher Training

All services are strictly confidential.
Sliding scale fee available.

Stephanie Agnew *Assistant Director* *Parents Place on the Peninsula*

Stephanie is the Assistant Director of Parents Place with JFCS' Center for Children and Youth, where she has worked since 2002. She has an extensive background in Early Childhood Education with 20 years of teaching experience in Palo Alto area schools. Stephanie was trained at Bing Nursery School while getting her degree at Stanford and has taught all preschool age groups. Prior to joining the team at Parents Place, Stephanie owned her own small preschool in Palo Alto for five years before working as a parent educator and director of the Parent Education Program at The Children's Health Council.

Stephanie's specialties include young child behavior management, Kindergarten readiness, school choices and preschool teacher training and support. She teaches parenting classes, gives seminars, leads teacher training workshops, observes children at home and at school, and offers individual parents information and support about a wide array of parenting issues.

Do you need help finding the best elementary school for your child and family?

Meet with Stephanie!

To schedule a meeting, email: ccyintake@jfcs.org.

centerforchildrenandyouth.org

Parents Place Private Elementary School Fair 2024

Table of Contents

North Peninsula Schools (Hillsborough – Redwood City)

Acton Academy Silicon Valley.....	2
Carey School, The	5
Charles Armstrong School*	6
Episcopal Day School	7
Harper School	10
Kids Connection	16
Nueva School, The.....	20
Redeemer School.....	24
UP Academy	33
Wornick Jewish Day School*	37

South Peninsula Schools (Menlo Park – San Jose)

Action Day School*	1
Athena Academy.....	3
Bowman School.....	4
German International School of Silicon Valley.....	8
Gideon Hausner Jewish Day School	9
Helios School.....	11
Hillbrook School*	12
Imagination Lab School	13
Keys School.....	14
Khan Lab School*	15
La Scuola International School*	17
Living Wisdom School of Palo Alto	18
Los Altos Christian School.....	19
Peninsula School	21
Phillips Brooks School	22
Pinewood School	23
Resurrection Catholic School.....	25
Sacred Heart Schools, Atherton	26
Saint Simon Parish School.....	27
Silicon Valley International School	28
Stratford School, Palo Alto	29
Tessellations School.....	30
Trinity School	31
Trū School.....	32
UP Academy	33
Ventana School	34
Waldorf School of the Peninsula	35
Woodland School	36
Yavneh Day School*	38
Yew Chung International School Silicon Valley.....	39

Note: Schools with an * are not in attendance.

Action Day School				Parent Notes
Address		3500 Amber Drive, San Jose, CA 95128		
Website		www.actiondayschools.com		
Head of school		Leah Kidger		
408-248-2464		leah@actiondayschools.com		
Admissions director		Michelle Fleming		
669-304-2552		mfleming@actiondayschools.com		
Total enrollment 200		Teachers and aides per class 1-2, depending on ratio		
Grade levels PS, PK, TK - 4th				
Class size	Pre-K 12 each	Kindergarten 18	Upper grades 22	
Hours	Pre-K 8am - 2:45 pm	Kindergarten 8:15am - 2:45 pm	Upper grades 8:15am - 2:45pm	
Before/after care	6:30am-6:00pm, Extended Day and Enrichment Clubs			
Tuition	Pre-K \$1,856/mo	Kindergarten \$19,930	Upper grades \$20,430	
Financial aid	N/A			
Admissions deadline	February 28th, 2025			
Open house	October 19th, 2024 from 9am - 2pm			
Mission statement	We create excitement for learning in a fun and loving environment. Action Day offers a broad and balanced, holistic, values-based education with an emphasis on joy, fun, and creating excitement for learning at all levels. At Action Day, the student is at the center of our educational journey. By nurturing a culture of care and well-being, we create optimal conditions for learning. Our learning beliefs are centered around the latest research in learning and our legacy of over 55 years of experience in education.			

Acton Academy Silicon Valley		Parent Notes	
Address	201 Arch St., Redwood City, CA 94062 (Elem/Middle)		
Website	actonsv.com		
Head of school	Muhammad Iqbal		
650-204-0304	miqbal@actonsv.com		
Admissions director	Erika K. Clark		
415-646-6840	admissions@actonsv.com		
Total enrollment	Teachers and aides per class		
80	1-2		
Grade levels			
Preschool age 2 - 8th Grade			
Class size	Pre-K	Kindergarten	Upper grades
	1:9	1:15	1:15
Hours	Pre-K	Kindergarten	Upper grades
	8:15am - 3:15 pm	8 am - 3:15 pm	8 am - 3:15 pm
Before/after care	3:15-5:30		
Tuition	Pre-K	Kindergarten	Upper grades
	\$21,700	\$27,500	\$27,500
Financial aid	N/A		
Admissions deadline	Rolling Admissions		
Open house	K - 8 Campus Tours: Tuesdays at 10am (location listed above) Preschool Campus: Tues & Thurs at 9am (location: 233 Topaz Street, Redwood City, CA 94062)		
Mission statement	At Acton SV, we boldly reimagine education by embracing a learner-driven approach that encourages curiosity, critical thinking, and real-world exploration. Our innovative model eliminates traditional homework and grades, focusing instead on project-based learning and personalized, self-paced progression. By empowering learners to take ownership of their learning journey, we cultivate a deep love for learning that extends far beyond the classroom, preparing them to thrive in an ever-evolving world.		

Athena Academy			Parent Notes
Address	525 San Antonio Ave., Palo Alto, CA 94306		
Website	https://athenaacademy.org/		
Head of school	Victoria Trevor		
650-543-4560	victoria@athenaacademy.org		
Admissions director	Anne Boswell		
650-543-4560	anne@athenaacademy.org		
Total enrollment 65	Teachers and aides per class 1		
Grade levels 1-8			
Class size	Pre-K 0	Kindergarten 0	Upper grades 6-10
Hours	Pre-K N/A	Kindergarten N/A	Upper grades 8:30am-3:25pm
Before/after care	N/A		
Tuition	Pre-K N/A	Kindergarten N/A	Upper grades \$47,500
Financial aid	Yes		
Admissions deadline	Rolling Admissions		
Open house	See website for information session dates		
Mission statement	To teach dyslexic children how to own their neurodiverse talents. With a mixture of conventional and pioneering educational methods, we create environments that help students feel confident and believe in their wisdom. This makes them strong students who are academically and emotionally renewed.		

Bowman School			Parent Notes
Address	4000 Terman Drive, Palo Alto, CA 94131		
Website	bowmanschool.org		
Head of school	Mary Beth Ricks		
(650) 813-9131	head@bowmanschool.org		
Admissions director	Gaggan Bhella Piché		
(650) 813-9131	gaggan@bowmanschool.org		
Total enrollment 300	Teachers and aides per class 5 for Prek-K, 3 for elementary		
Grade levels ps, pk, k, 1-8, 9-12			
Class size	Pre-K 30	Kindergarten 30	Upper grades 24
Hours	Pre-K 7:30am to 6pm	Kindergarten 7:30am to 6pm	Upper grades 7:30am to 6pm
Before/after care	All Inclusive		
Tuition	Pre-K \$42,903	Kindergarten \$42,903	Upper grades \$42,903
Financial aid	Yes		
Admissions deadline	January 2025		
Open house	Oct 1 9:30am-11am and Oct 8 9:30am-11am Nov 12 9:30am-11am Dec 10 9:30am-11am Jan 14 9:30am-11am		
Mission statement	We inspire children to love learning in an academically challenging and internationally aware program that promotes respect, responsibility, and independence.		

The Carey School			Parent Notes
<i>Address</i>	1 Carey School Lane, San Mateo, CA 94403		
<i>Website</i>	careyschool.org		
<i>Head of school</i>	Neely Norris		
650-345-8205	nnorris@careyschool.org		
<i>Admissions director</i>	Ida Gruber		
650-345-4410	igruber@careyschool.org		
<i>Total enrollment</i> 298	<i>Teachers and aides per class</i> 2		
<i>Grade levels</i> Preschool 3s, Pre-Kindergarten, Kindergarten, Grades 1-5			
<i>Class size</i>	<i>Pre-K</i> 12	<i>Kindergarten</i> 22	<i>Upper grades</i> 22
<i>Hours</i>	<i>Pre-K</i> 8:30am - 2:45pm	<i>Kindergarten</i> 8:15am - 2:45pm	<i>Upper grades</i> 8:15am - 3:15am
<i>Before/after care</i>	7:45am - 8am, 2:45pm - 6:00pm		
<i>Tuition</i>	<i>Pre-K</i> \$34,415	<i>Kindergarten</i> \$41,093	<i>Upper grades</i> \$41,093
<i>Financial aid</i>	Yes		
<i>Admissions deadline</i>	January 10, 2025		
<i>Open house</i>	October 19, 9:30am - 11am: Preschool October 20, 9:30am - 11am : Main Campus December 14, 9:30am - 11am: Preschool December 15, 9:30am - 11am: Main Campus		
<i>Mission statement</i>	Specializing in elementary education, The Carey School inspires curious, confident, and joyful learners and celebrates childhood in an inclusive, diverse community that nurtures kindness, respect, and personal responsibility.		

Charles Armstrong				Parent Notes
Address		1405 Solana Dr, Belmont, CA 94002		
Website		www.charlesarmstrong.org		
Head of school		Neil Tuch		
650-592-7570		Ntuch@charlesarmstrong.org		
Admissions director		Brian Barish		
650-592-7570		bbarish@charlesarmstrong.org		
Total enrollment 240		Teachers and aides per class 2		
Grade levels 2nd - 8th				
Class size	Pre-K N/A	Kindergarten N/A	Upper grades 13-20	
Hours	Pre-K N/A	Kindergarten N/A	Upper grades 8:15am-3:15pm	
Before/after care	Aftercare runs until 5:30pm			
Tuition	Pre-K N/A	Kindergarten N/A	Upper grades \$57,000	
Financial aid	Yes, we offer up to 90% of tuition based on need			
Admissions deadline	Rolling admissions for grades 2-5			
Open house	Virtual information Sessions: October 8th and December 3rd from 5-6pm Open Houses: November 5th and February 11th from 9am-noon			
Mission statement	Charles Armstrong School's mission is to unlock the unique potential of students with dyslexia and related learning differences, changing the trajectory of their lives. Charles Armstrong is the West Coast leader in teaching students with dyslexia in grades 2-8. Our research-based, time-tested approach is multi-sensory and experiential to meet students with dyslexia where they are, help them understand how they learn best, leverage their strengths, and develop the confidence to thrive in school and beyond.			

Episcopal Day School			Parent Notes
Address	16 Baldwin Avenue, San Mateo, CA 94401		
Website	www.episcopaldaysanmateo.org		
Head of school	Quincey Grieve		
(650) 274-0700	Qrieve@episcopaldaysanmateo.org		
Admissions director	Tish Scola		
(650) 274-0728	tscola@episcopaldaysanmateo.org		
Total enrollment 310	Teachers and aides per class 2		
Grade levels Pre-K - 8th Grade			
Class size	Pre-K 20	Kindergarten 16	Upper grades 18
Hours	Pre-K 8:05 - 2:15	Kindergarten 8:05 - 2:50	Upper grades 8:00 - 3:15
Before/after care	From dismissal until 6:00 pm		
Tuition	Pre-K \$32,500	Kindergarten \$41,845	Upper grades \$45,230
Financial aid	Yes		
Admissions deadline	January 20, 2025		
Open house	10/19, 11/16, 12/7, 1/11		
Mission statement	To inspire, through an academically challenging course of study, the intellectual curiosity, confidence, moral courage, and character that prepare students to be leaders of positive change in the world.		

German International School of Silicon Valley			Parent Notes
<i>Address</i>	310 Easy Street, Mountain View, CA 94043		
<i>Website</i>	https://www.gissv.org/		
<i>Head of school</i>	Dr. Alexandra Blank		
(650) 254-0748	office@gissv.org		
<i>Admissions director</i>	Franziska Wilsberg		
(650) 254-0748	admissions@gissv.org		
<i>Total enrollment</i> 550	<i>Teachers and aides per class</i> 1-2		
<i>Grade levels</i> Preschool - Grade 12			
<i>Class size</i>	<i>Pre-K</i> Max. 20	<i>Kindergarten</i> Max. 20	<i>Upper grades</i> Ca. 18
<i>Hours</i>	<i>Pre-K</i> 8 am - 1:30 pm	<i>Kindergarten</i> 8 am - 1:30 pm	<i>Upper grades</i> 8:00 am-1:50 pm
<i>Before/after care</i>	7:30 am / 5 pm		
<i>Tuition</i>	<i>Pre-K</i> Max. \$32,600 (MV)	<i>Kindergarten</i> Max. \$32,600 (MV)	<i>Upper grades</i> Max \$33,100 (MV)
<i>Financial aid</i>	Yes		
<i>Admissions deadline</i>	Rolling Admissions		
<i>Open house</i>	San Francisco (SF) Campus Sat, October 5, 2024 Mountain View (MV) Campus Sat, October 26, 2024 Virtual Open House (MV & SF) Thu, January 16, 2025		
<i>Mission statement</i>	GISSV inspires students from preschool through high school to become global citizens. We provide a multicultural dual-language environment that promotes responsibility, critical thinking and academic excellence. Our programs culminate in U.S. and German diplomas, preparing our graduates for worldwide opportunities.		

Gideon Hausner Jewish Day School			Parent Notes
<i>Address</i>	450 San Antonio Road, Palo Alto, CA 94306		
<i>Website</i>	admissions@hausnerschool.org		
<i>Head of school</i>	Rabbi Daniel Lehmann		
(650) 494-8200	dlehmann@hausnerschool.org		
<i>Admissions director</i>	Valerie Porush Hoffman		
(650) 494-4404	vphoffman@hausnerschool.org		
<i>Total enrollment</i> 310	<i>Teachers and aides per class</i> Lead teacher and assistance teacher		
<i>Grade levels</i> TK - 8			
<i>Class size</i>	<i>Pre-K</i> 15	<i>Kindergarten</i> Max. 24/class	<i>Upper grades</i> Max. 24/class
<i>Hours</i>	<i>Pre-K</i> 8:30 am - 3:15 pm	<i>Kindergarten</i> 8:30 am - 3:15 pm	<i>Upper grades</i> 8:15 am - 3:45 pm
<i>Before/after care</i>	Mon–Fri, starting at 7:30 am, Mon–Thu 3:30–5:30 pm, Fri 3:30–4:30 pm in winter, 3:30–5:00 in fall and spring		
<i>Tuition</i>	<i>Pre-K</i> \$ 35,100	<i>Kindergarten</i> \$ 38,900	<i>Upper grades</i> \$ 42,400
<i>Financial aid</i>	Yes		
<i>Admissions deadline</i>	January 30, 2025		
<i>Open house</i>	For TK and K: September 18, 2024, 8:45-10:30am For TK-8: September 25, 2024, 8:45-10:30, November 1, 2024, 8:45-10:30 am, 2024, and November 21, 2024 6:30-7:30 pm		
<i>Mission statement</i>	Gideon Hausner Jewish Day School cultivates a joyful learning community that builds students’ capacity for critical thinking, creativity, and moral courage by nurturing their natural curiosity and exploring their compelling questions through a complementary curriculum of general and Jewish studies.		

Harper School			Parent Notes
<i>Address</i>	3150 Granger Way, Redwood City, CA 94061		
<i>Website</i>	harperschool.org		
<i>Head of school</i>	Maritza Lopez		
(650) 482-2048	rwc@harperschool.org		
<i>Admissions director</i>	Maritza Lopez		
(650) 485-1075	mlopez@harperschool.org		
<i>Total enrollment</i> 50	<i>Teachers and aides per class</i> 1-2		
<i>Grade levels</i> Pre-K, TK, Kinder and First Grade			
<i>Class size</i>	<i>Pre-K</i> 7-12, max of 24	<i>Kindergarten</i> 7-15	<i>Upper grades</i> 5-15
<i>Hours</i>	<i>Pre-K</i> 8:15-3:30	<i>Kindergarten</i> 8:15-3:30	<i>Upper grades</i> 8:15-3:30
<i>Before/after care</i>	7-8:15am / 3:30-6pm		
<i>Tuition</i>	<i>Pre-K</i> \$6,500-\$51,000	<i>Kindergarten</i> \$6,500-\$51,000	<i>Upper grades</i> \$6,500-\$51,000
<i>Financial aid</i>	Yes		
<i>Admissions deadline</i>	Rolling Admissions		
<i>Open house</i>	We have an Open House every month. Please follow our Instagram or Facebook page to see future dates- @HarperSchool-California		
<i>Mission statement</i>	Harper School is a private preschool and elementary school focused on high expectations, academic success, and character development. Our goal is to help your child fulfill his or her full potential in and out of the classroom.		

Helios School				Parent Notes
Address	597 Central Avenue, Sunnyvale, CA 94086-6336			
Website	heliosschool.org			
Head of school	Ben Chant			
(408) 475-1024	ben.chant@heliosschool.org			
Admissions director	Kristi Meier			
(408) 475-0017	kristi.meier@heliosschool.org			
Total enrollment 165	Teachers and aides per class 2			
Grade levels K - 8				
Class size	Pre-K N/A	Kindergarten 18-20	Upper grades 18	
Hours	Pre-K N/A	Kindergarten 8:30am-3:15pm	Upper grades 8:15am-3:15pm	
Before/after care	Until 6pm			
Tuition	Pre-K N/A	Kindergarten \$42,450	Upper grades \$46,300	
Financial aid	Yes			
Admissions deadline	January 9, 2025			
Open house	Campus Tour is on October 26, 2024 from 10am - 12pm			
Mission statement	To provide engaging and imaginative education that meets the unique intellectual, social and emotional needs of gifted students and their families and to empower authenticity through respect for self and others.			

Hillbrook School			Parent Notes
<i>Address</i>	300 Marchmont Dr, Los Gatos, CA 95032		
<i>Website</i>	www.hillbrook.org		
<i>Head of school</i>	Mark Silver		
408-356-6116	msilver@hillbrook.org		
<i>Admissions director</i>	Kimberly M Yarnall		
408-356-6116 x560	kyarnall@hillbrook.org		
<i>Total enrollment</i> 440	<i>Teachers and aides per class</i> 1-3 depending on grade		
<i>Grade levels</i> JK - 12			
<i>Class size</i>	<i>Pre-K</i> 15	<i>Kindergarten</i> ~15	<i>Upper grades</i> ~18
<i>Hours</i>	<i>Pre-K</i> 8:00am - 3:00pm	<i>Kindergarten</i> 8:00am - 3:00pm	<i>Upper grades</i> 8:00am - 3:00pm
<i>Before/after care</i>	After Care Hours until 6:00pm		
<i>Tuition</i>	<i>Pre-K</i> \$43,500	<i>Kindergarten</i> \$43,500	<i>Upper grades</i> \$43,500
<i>Financial aid</i>	Yes		
<i>Admissions deadline</i>	January 23, 2025		
<i>Open house</i>	Lower/Middle School Los Gatos Campus: Saturday, November 16		
<i>Mission statement</i>	Hillbrook provides an extraordinary educational experience that fosters a love of learning in our students and helps them develop the knowledge, skills, and confidence to achieve their highest individual potential in school and in life. At Hillbrook, students are known, respected, and valued as individuals, and every day is a journey of self-discovery, imaginative thinking, creative problem solving, laughter, and friendship.		

Imagination Lab School				Parent Notes
Address		4050 Middlefield Road, Palo Alto, CA 94303		
Website		https://www.imagination-school.org/		
Head of school		Chris Bezsylko		
(650) 242-5976		chris@imagination-school.org		
Admissions director		Chris Bezsylko		
(650) 242-5976		chris@imagination-school.org		
Total enrollment 44		Teachers and aides per class 1		
Grade levels TK-K, 1-3, 4-6, 7-8				
Class size	Pre-K 16-18	Kindergarten 16-18	Upper grades 18-22	
Hours	Pre-K TK-8 8:40-3:15	Kindergarten TK-8 8:40-3:15	Upper grades TK-8 8:40-3:15	
Before/after care	8:15-8:40am and 3:30-6pm			
Tuition	Pre-K \$3500 - \$40,750	Kindergarten \$3500 - \$40,750	Upper grades \$3500 - \$40,750	
Financial aid	Yes			
Admissions deadline	January 2025			
Open house	TBD			
Mission statement	Our mission is to ignite and nurture confidence, curiosity, and creativity. Our vision is to prepare students for a future that is impossible to know but not impossible to shape.			

Keys School			Parent Notes
Address	2890 Middlefield Road, Palo Alto, CA 94306		
Website	https://keysschool.org/		
Head of school	Heather Rodgers		
650-328-1711, ext 101	hrogers@keysschool.org		
Admissions director	Jing Xu		
650-328-1711, ext 137	jxu@keysschool.org		
Total enrollment 321	Teachers and aides per class 2 in K, 1.5 in G1-2, 1 in 3 and 4, with Specialists assisting		
Grade levels K - 8			
Class size	Pre-K N/A	Kindergarten 36	Upper grades 36
Hours	Pre-K N/A	Kindergarten 8:30 am - 3:00 pm	Upper grades 8:30am - 3:00pm
Before/after care	Before care starts at 7:30. After care runs from 3:30-6:00 pm.		
Tuition	Pre-K N/A	Kindergarten K–4: \$42,100	Upper grades G5–8: \$46,000
Financial aid	Yes		
Admissions deadline	January 6, 2025		
Open house	Lower School - October 5 & Dec 14, 2024 Middle School - October 26, 2024		
Mission statement	Keys School challenges students to develop a keen intellect and a generous spirit, to advocate for themselves and others, and to honor curiosity and reflection in an increasingly hurried world.		

Khan Lab School				Parent Notes
Address		3233 Cowper St, Palo Alto, CA 94306		
Website		https://khanlabschool.org/		
Head of school		Kim Dow		
650-489-0071		admissions@khanlabschool.org		
Admissions director		Jennifer Chapa		
650 557-3334		admissions@khanlabschool.org		
Total enrollment 285		Teachers and aides per class 1-2		
Grade levels Lower School K-5 (Palo Alto); Middle & Upper Schools 6-12 (Mountain View)				
Class size	Pre-K N/A	Kindergarten 18	Upper grades ~20	
Hours	Pre-K N/A	Kindergarten 9:00am-3:30pm	Upper grades 9:00am-3:30pm	
Before/after care	3:30-6:00pm			
Tuition	Pre-K N/A	Kindergarten \$32,100	Upper grades \$32,100	
Financial aid	Yes			
Admissions deadline	January 15, 2025 (rolling admission after that)			
Open house	Lower School Open Houses: Thursday, October 10, 4:30pm; Friday, November 15, 4:30pm; Saturday, December 7, 10:00am			
Mission statement	Khan Lab School is a community of learners empowering every student to navigate their own path.			

Kids Connection			Parent Notes
Address	1998 Beach Park Blvd., Foster City, CA 94404		
Website	www.kidsconnectionschoools.com		
Head of school	Dana Ganes		
(650) 578-6691	dganesh@kc4us.com		
Admissions director	Dana Ganes		
(650) 578-6691	dganesh@kc4us.com		
Total enrollment 240	Teachers and aides per class 1 teacher with floating aides		
Grade levels Preschool (age 2)- 5th grade			
Class size	Pre-K 1:10 ratio	Kindergarten 16 max	Upper grades 20 max
Hours	Pre-K Part-time or full-time	Kindergarten 8:20am-2pm	Upper grades 8:20am-2:45pm
Before/after care	The school is open from 7am-6pm		
Tuition	Pre-K Varies	Kindergarten \$21,800	Upper grades \$22,400
Financial aid	Yes		
Admissions deadline	January 17, 2025		
Open house	Visit: https://kidsconnectionschoools.com/elementary/admissions/admissions-events/ for tour and event information.		
Mission statement	At Kids Connection, we are dedicated to fostering a community where academic excellence meets social-emotional growth. Our mission is to educate both the hearts and minds of our students, inspiring them to become compassionate, curious, and creative individuals. We create an environment where innovative teaching methods and state-of-the-art technology transform the learning experience, nurturing a love for knowledge and exploration.		

La Scuola International School			Parent Notes
Address	2086 Clarke Avenue, East Palo Alto, CA 94303		
Website	www.lascuolasf.org		
Head of school	Valentina Imbeni, PhD		
650-800-9650	paola.barberi@lascuolasf.org		
Admissions director	Duel Directorship: Paola Barberi and Nichole Leon		
415-551-0000 x412	admissions@lascuolasf.org		
Total enrollment 435 combined	Teachers and aides per class 2		
Grade levels Pre-K - 2nd (increasing one grade per year)			
Class size	Pre-K 18	Kindergarten 18	Upper grades 18-20
Hours	Pre-K 8.30am-5.30pm	Kindergarten 8.30am-3.00pm	Upper grades 8.30am-3.00pm
Before/after care	3:30-6:00pm		
Tuition	Pre-K \$30,720-\$38,380	Kindergarten \$37,900	Upper grades \$37,900
Financial aid	Yes		
Admissions deadline	January 15th, 2025, then on rolling bases if space available		
Open house	October 27th from 10.00 to 11.30am February 4th from 6.00 to 7.00pm		
Mission statement	Inspire brave learners to shape the future		

Living Wisdom School of Palo Alto			Parent Notes
Address	456 College Avenue, Palo Alto, CA 94306		
Website	www.livingwisdomschool.org		
Head of school	Aryavan McSweeney		
(650) 462-8150	aryavan@livingwisdomschool.org		
Admissions director	Gary McSweeney		
(650) 462-8150	gary@livingwisdomschool.org		
Total enrollment 75	Teachers and aides per class 1		
Grade levels TK-12th			
Class size	Pre-K 6	Kindergarten 6	Upper grades 8
Hours	Pre-K 8:30am-3:00pm	Kindergarten 8:30am-3:00pm	Upper grades 8:30am-3:00pm
Before/after care	3:00 - 6:00pm		
Tuition	Pre-K \$26,900	Kindergarten \$26,900	Upper grades \$28,600-\$34,600
Financial aid	Yes		
Admissions deadline	Rolling Admissions		
Open house	Wed. October 23rd Sat. November 16th Sat. Feb. 1st		
Mission statement	Living Wisdom School delivers an excellent academic education delivered in a caring, compassionate environment. We believe children do their best when they are respected, nurtured, and guided to be their very best selves.		

Los Altos Christian School			Parent Notes
Address	25 Magdalena Avenue, Los Altos, CA 94024		
Website	lacs.com		
Head of school	Lizette Hibbert		
650-948-3738, x 0602	lizette.hibbert@lacs.com		
Admissions director	Kimberly Azucena		
650-948-3738, x0604	Admissions@lacs.com		
Total enrollment 150	Teachers and aides per class 1 teacher/class, 1 aide for Learning Support classes of over 5		
Grade levels TK-8 and Learning Support Program classes also available 1st through 8th grades			
Class size	Pre-K 10 max	Kindergarten 20 max, aide with >15'	Upper grades 20 max
Hours	Pre-K 8:30-2:00	Kindergarten 8:30-2:00	Upper grades 8:30 - 3:00
Before/after care	EDC is 7:30 to 8:15 a.m. daily and 3:00 - 6:00 p.m. daily (2:00 start on Wednesdays)		
Tuition	Pre-K \$13,000	Kindergarten \$14,000	Upper grades \$15,600
Financial aid	Yes		
Admissions deadline	Applications open beginning on October.1, 2024		
Open house	October 19, 2024 10:00 a.m. to 12:00 p.m.		
Mission statement	LACS equips students by providing a challenging academic environment through caring and rigorous instruction. The curriculum encourages innovative and critical thinking, strong communication skills, and effective skill to real-life application. LACS actively promotes knowledge and understanding of God's love through His Son, Jesus Christ, which will transform all aspects of the student's life and character. Social-emotional learning is incorporated in all areas of student life.		

The Nueva School			Parent Notes
<i>Address</i>	6565 Skyline Boulevard, Hillsborough, CA 94010		
<i>Website</i>	nuevaschool.org		
<i>Head of school</i>	Lee Fertig		
650-350-4515	lfertig@nuevaschool.org		
<i>Admissions director</i>	Melanie León		
650-235-7111	mleon@nuevaschool.org		
<i>Total enrollment</i> 967	<i>Teachers and aides per class</i> 2+		
<i>Grade levels</i> PreK-12			
<i>Class size</i>	<i>Pre-K</i> 15	<i>Kindergarten</i> 38	<i>Upper grades</i> varies
<i>Hours</i>	<i>Pre-K</i> 8:00am-3:30pm	<i>Kindergarten</i> 8:00am-3:30pm	<i>Upper grades</i> 8:55am-3:10pm
<i>Before/after care</i>	3:30-6:00pm		
<i>Tuition</i>	<i>Pre-K</i> \$35,585	<i>Kindergarten</i> \$44,825	<i>Upper grades</i> \$63,720
<i>Financial aid</i>	Yes		
<i>Admissions deadline</i>	January 9, 2025		
<i>Open house</i>	LS Virtual Program Preview October 17; 5:30-7pm. MS/US Program Previews on Sept 28; 9:30-11:30 MS, 1-3pm US, October 26; 9:30-11:30 US, 1-3pm MS, November 16; 9:30-11:30 US, 1-3pm MS		
<i>Mission statement</i>	For over fifty years, Nueva has pursued its mission in two ways — Nueva provides students with an outstanding, tailored education (Mission I); and Nueva works to reach teachers, students, and administrators everywhere by engaging the education community actively within the Bay Area, across the nation, and around the world (Mission II).		

Peninsula School			Parent Notes
Address	92O Peninsula Way, Menlo Park, CA 94025		
Website	www.Peninsulaschool.org		
Head of school	Johanna Aeschliman		
(650) 325-1584	johanna.a@peninsulaschool.org		
Admissions director	Michele Buschini		
(650) 325-1584 x114	admissions@peninsulaschool.org		
Total enrollment 220	Teachers and aides per class 2-4		
Grade levels Preschool, K-8			
Class size	Pre-K 20	Kindergarten 20	Upper grades 20
Hours	Pre-K 9-12:30 or 9-3	Kindergarten 9-3	Upper grades 9-3
Before/after care	7:30-9 and 3-5:30		
Tuition	Pre-K \$22,300-\$32,000	Kindergarten \$32,000	Upper grades \$32,000
Financial aid	Yes		
Admissions deadline	Mid-January		
Open house	October through December		
Mission statement	Peninsula School creates a space where children thrive and develop their full promise as confident contributors in the world. Here they learn about themselves and others, discovering their passions and growing intellectually in an inclusive community rich with choices, exploration, and play.		

Phillips Brooks School			Parent Notes
Address	2245 Avy Avenue, Menlo Park, CA 94025		
Website	www.phillipsbrooks.org		
Head of school	Diane Rosenberg		
650-854-4545	drosenberg@phillipsbrooks.org		
Admissions director	Meeta Gaitonde		
650-854-4545	mgaitonde@phillipsbrooks.org		
Total enrollment 295	Teachers and aides per class 2		
Grade levels PS, PK, K-5			
Class size	Pre-K 16	Kindergarten 20	Upper grades 20
Hours	Pre-K 8:10 to 3:00	Kindergarten 8:20 to 3:10pm	Upper grades 8:20 to 3:15pm
Before/after care	7:30am to 8am		
Tuition	Pre-K \$37,755	Kindergarten \$44,920	Upper grades \$44,920
Financial aid	Yes		
Admissions deadline	January 21, 2025		
Open house	Weekly campus tours		
Mission statement	The Phillips Brooks School community inspires students to love learning, to develop a spiritual nature, to communicate effectively, to be kind to others, and to respect the uniqueness of each person.		

Pinewood School				Parent Notes
Address		327 Fremont Avenue, Los Altos, CA 94024		
Website		www.pinewood.edu		
Head of school		Scott Riches		
(650) 209-3037		sriches@pinewood.edu		
Admissions director		Sarah Riches		
(650) 209-3020		sariches@pinewood.edu		
Total enrollment 600		Teachers and aides per class 1		
Grade levels K-12				
Class size	Pre-K N/A	Kindergarten 7	Upper grades 12 - 20	
Hours	Pre-K N/A	Kindergarten 8:15-3:15pm	Upper grades 8:15-3:15pm	
Before/after care	8-5:30pm			
Tuition	Pre-K N/A	Kindergarten \$42,410	Upper grades \$56,050	
Financial aid	Yes			
Admissions deadline	January 10th, 2025			
Open house	K-2 grade November 16th 11:30-1:30pm 3-6 Grade November 16th 9-11am 7-12 grades November 9th 9:45-12pm			
Mission statement	Pinewood students seek knowledge, demonstrate character, build confidence, and experience joy in an uplifting community.			

Redeemer School			Parent Notes
Address	468 Grand Street, Redwood City, CA 94062		
Website	www.redeemer-school.org		
Head of school	Mike Mancini		
650-366-3466 ext.15	mmancini@redeemerrwc.org		
Admissions director	N/A		
N/A	N/A		
Total enrollment 160	Teachers and aides per class 1		
Grade levels Transitional Kindergarten through 8			
Class size	Pre-K 16	Kindergarten 20	Upper grades 24-28
Hours	Pre-K 8am-3pm	Kindergarten 8am-3pm	Upper grades 8am-3pm
Before/after care	3pm-6pm		
Tuition	Pre-K \$16,700	Kindergarten \$16,700	Upper grades \$16,700
Financial aid	Yes		
Admissions deadline	Rolling Admission Beginning December 1st		
Open house	Tour dates available upon request. Call or visit our website.		
Mission statement	Providing an excellent education in a loving Christian environment; cultivating character, intellect, and faith.		

Resurrection Catholic School			Parent Notes
<i>Address</i>	1395 Hollenbeck Avenue, Sunnyvale, CA 94087		
<i>Website</i>	rescatholicschool.org		
<i>Head of school</i>	Jacqueline Wright		
(408) 245-4571	jacque.wright@rescatholicschool.org		
<i>Admissions director</i>	Giuseppi Tanzi		
(408) 931-5638	giuseppi.tanzi@rescatholicschool.org		
<i>Total enrollment</i> 52	<i>Teachers and aides per class</i> 1-2		
<i>Grade levels</i> Transitional Kindergarten, Kindergarten, 1-8			
<i>Class size</i>	<i>Pre-K</i> TBD	<i>Kindergarten</i> TBD	<i>Upper grades</i> TBD
<i>Hours</i>	<i>Pre-K</i> 8:00am-3:00pm	<i>Kindergarten</i> 8:00am-3:00pm	<i>Upper grades</i> 8:00am-3:00pm
<i>Before/after care</i>	7:15am-8:00am, 3:00pm-6:00pm; Wednesdays 12:30pm-6:00pm		
<i>Tuition</i>	<i>Pre-K</i> \$14,300	<i>Kindergarten</i> \$15,900	<i>Upper grades</i> \$15,900
<i>Financial aid</i>	Yes		
<i>Admissions deadline</i>	Rolling Admissions		
<i>Open house</i>	Tuesday, November 19th, 2024 from 9:00am-12:00pm; Saturday, January 25th, 2025 from 2:00pm-4:30pm; Tuesday, January 28th, 2025 from 9:00am-12:00pm		
<i>Mission statement</i>	Resurrection School seeks to develop each student's lifelong moral and intellectual foundation by nurturing every child's unique potential, spiritually and academically, in a Christ-centered, peace-filled, family-involved environment. This is achieved through strong religious and educational goals. This environment is characterized by trust, professionalism, realistic expectations for all students, and a true respect for diversity.		

Sacred Heart Schools, Atherton			Parent Notes
<i>Address</i>	150 Valparaiso Avenue, Atherton, CA 94027		
<i>Website</i>	shschools.org		
<i>Head of school</i>	Richard Dioli		
650-322-1866	shschools.org		
<i>Admissions director</i>	Wendy Quattlebaum		
650-473-4073	wendyq@shschools.org		
<i>Total enrollment</i> 1186	<i>Teachers and aides per class</i> 2 teachers PS		
<i>Grade levels</i> Preschool - 12th			
<i>Class size</i>	<i>Pre-K</i> 18	<i>Kindergarten</i> 15-16	<i>Upper grades</i> 15-17/18
<i>Hours</i>	<i>Pre-K</i> 8:30 - 11:45 or 2:45	<i>Kindergarten</i> 8:30-3:15	<i>Upper grades</i> 8:30-3:15
<i>Before/after care</i>	Until 6:00pm (for additional fee)		
<i>Tuition</i>	<i>Pre-K</i> \$36,648	<i>Kindergarten</i> \$40,417	<i>Upper grades</i> \$40,417
<i>Financial aid</i>	Yes		
<i>Admissions deadline</i>	January 9th, 2025		
<i>Open house</i>	Preview Events for those with applications on file. Virtual informational sessions for interested parents.		
<i>Mission statement</i>	SHS nurtures students to be good at heart; to confront challenges with a curious and critical mind; to ease suffering and seek justice. A whole child education in the Sacred Heart tradition allows us to love each child deeply, to understand their individual spirits and to help them integrate the various dimensions of their identities into a coherent, thoughtful and compassionate human being who is sensitive and alert to the needs of others. Our mission cultivates a personal understanding and active faith in God and lays the foundation		

Saint Simon Parish School			Parent Notes
Address	1840 Grant Road, Los Altos, CA 94024		
Website	https://stsimon.school		
Head of school	Ann Kozlovsky		
(650) 880-1402	akozlovsky@stsimon.org		
Admissions director	Theresa Clark		
(650) 880-1456	tclark@stsimon.org		
Total enrollment 545	Teachers and aides per class Preschool/preK - 6 per 50, K=2, 1-4=1.5, 5-8=1		
Grade levels Preschool/PreK - 8			
Class size	Pre-K 25	Kindergarten 25	Upper grades 25-36
Hours	Pre-K Varies	Kindergarten 7:55 am - 2:55 pm	Upper grades 7:55am - 3:05pm
Before/after care	7:00 am - 7:30 am, after school to 6:00 pm		
Tuition	Pre-K \$5,200-\$20,135	Kindergarten \$15,500	Upper grades \$15,500
Financial aid	Yes		
Admissions deadline	December 15 for first round, rolling thereafter		
Open house	November 15, 9 am-12 pm, January 26, 10 am - 1 pm		
Mission statement	At Saint Simon Parish School, we strive to build a welcoming community, grounded in academic excellence, where students are guided by Catholic values, encouraged to discover and develop their talents, and inspired to lead lives of service.		

Silicon Valley International School			Parent Notes
Address	151 Laura Lane, Palo Alto, CA 94303		
Website	https://www.siliconvalleyinternational.org/		
Head of school	Barbara Greiner		
650-251-8503	Barbaragreiner@svintl.org		
Admissions director	Jennifer Tyler		
650-251-8503	JenniferTyler@svintl.org		
Total enrollment 780	Teachers and aides per class Vary by Grade		
Grade levels PS, PK, K, 1 - 12			
Class size	Pre-K 18-20 (with 3 adults)	Kindergarten 18 -20 (with 2 adults)	Upper grades Between 12 - 20
Hours	Pre-K 9:00 - 3:15	Kindergarten 8:30 - 3:30	Upper grades 8:00 - 3:30
Before/after care	Pre-K: 7:30am-5:30pm; Kindergarten - 5th: 7:30am-6:00pm		
Tuition	Pre-K \$36,990	Kindergarten \$38,670 (K-5)	Upper grades \$40,590-\$44,990
Financial aid	Yes		
Admissions deadline	January 13, 2025		
Open house	November 16th: 9:00 - 12:00 for Grades 6-12 December 14th: 9:00 - 12:00 for Grades Preschool - 5th		
Mission statement	Silicon Valley International School's focus on inquiry and bilingualism empowers young minds to embrace complexity, think critically from multiple perspectives, and demonstrate integrity and sensitivity across cultures.		

Stratford School Palo Alto			Parent Notes
Address		870 N California Avenue, Palo Alto, CA 94303	
Website		www.Stratfordschools.com	
Head of school		Sheila Pereira	
650-493-1151		PA@stratfordschools.com	
Admissions director		Freda Chow	
650-493-1151		fchow@stratfordschools.com	
Total enrollment 435		Teachers and aides per class 1-2	
Grade levels Early Preschool through 8th grade			
Class size	Pre-K 24	Kindergarten 30	Upper grades 24
Hours	Pre-K 8:30a - 4:00p	Kindergarten 8:30a - 3:30p	Upper grades 7:45a - 3:15p
Before/after care	7:00 - 8:00a; 3:00p - 6:00p		
Tuition	Pre-K \$22,620	Kindergarten \$23,750	Upper grades \$25,530
Financial aid	N/A		
Admissions deadline	Rolling basis		
Open house	Sat., Oct. 19, 2024 9:00 am - 1:00 pm Sat., Jan. 25, 2025 9:00 am - 1:00 pm		
Mission statement	At Stratford School, we understand every child has his or her own interests and passions and contributes in his or her own way. Our purpose statement speaks for all of us – “Stratford School – Connecting students to their unique futures.”		

Tessellations School			Parent Notes
Address	1170 Yorkshire Drive, Cupertino, CA 95014		
Website	https://tessellations.school/		
Head of school	Kai Marks (PK-8)		
(408) 359-7151	kai.marks@tessellations.school		
Admissions director	Susan Stanat		
(408) 359-7151	susan.stanat@tessellations.school		
Total enrollment 265	Teachers and aides per class 2		
Grade levels Preschool (age 3) to 10th grade (adding 11 and 12 later)			
Class size	Pre-K 35 with 6:1	Kindergarten 14-16	Upper grades 12-16
Hours	Pre-K 8:15am – 3:00pm	Kindergarten 8:15am – 3:00pm	Upper grades 8:15am – 3:00pm
Before/after care	Before care available for K-10 grades, aftercare available for all grades		
Tuition	Pre-K \$41,500	Kindergarten \$41,500	Upper grades \$42,500
Financial aid	Yes		
Admissions deadline	Rolling admission - We give admissions decisions all year		
Open house	September 19th, October 1st, and ongoing.		
Mission statement	Tessellations provides challenging experiential education that recognizes and nurtures the individual strengths of gifted learners, empowering them to confidently express who they are and pursue a meaningful life. We are a community of imaginative, empathetic, productive, and passionate lifelong learners who advance an equitable and sustainable world.		

Trinity School			Parent Notes
Address	2650 Sand Hill Road, Menlo Park, CA 94025		
Website	https://www.trinity-mp.org/		
Head of school	Kate Benson		
(650) 854-0288	kbenson@trinity-mp.org		
Admissions director	Anna Quijano		
(650) 854-0288	aquijsano@trinity-mp.org		
Total enrollment 163	Teachers and aides per class 2-3		
Grade levels 2 year old's - grade 5			
Class size	Pre-K 18	Kindergarten 22	Upper grades 22
Hours	Pre-K Half day or Full	Kindergarten 8am - 3pm	Upper grades 8am - 3pm
Before/after care	3pm-6pm		
Tuition	Pre-K \$36,342	Kindergarten \$43,850	Upper grades \$43,850
Financial aid	Yes		
Admissions deadline	January 17, 2025		
Open house	Early Childhood Open House 10/26/2024; Elemetary Open House 11/16/2024		
Mission statement	Trinity School cultivates academic excellence in an environment where each child is known, valued, and unique in their own voice. The legacy of a Trinity education is a curious mind and a discerning heart.		

Trū School				Parent Notes
Address		625 Hamilton Avenue, Palo Alto, CA 94301		
Website		truschool.org		
Head of school		Theodore Timpson		
(650) 284-8979		theodore@truschool.org		
Admissions director		Adeline Moreau		
(650) 387-6828		adeline@truschool.org		
Total enrollment 36		Teachers and aides per class 1		
Grade levels Kindergarten-5				
Class size	Pre-K N/A	Kindergarten 6	Upper grades 6	
Hours	Pre-K N/A	Kindergarten 8:30 to 3pm	Upper grades 8:30 to 3pm	
Before/after care	3pm to 6pm			
Tuition	Pre-K N/A	Kindergarten \$28,900	Upper grades \$28,900	
Financial aid	Yes			
Admissions deadline	January 15, 2025			
Open house	Wednesday, October 16th and Saturday, November 16th			
Mission statement	At Trū, we integrate real-life experiences with academic learning, fostering critical thinking, creativity, and problem-solving skills. We offer a transformative educational journey that emphasizes social-emotional learning (SEL), inclusivity, diversity, and personalized academic attention. Our commitment to mindfulness practices and emotional regulation equips students to wrestle with complex ethical issues, preparing them to thrive in a rapidly changing world."			

UP Academy				Parent Notes
Address		2040 Pioneer Court, San Mateo, CA 94403		
Website		upacademysf.com		
Head of school		Tanya Sheckley		
650-796-3848		Tanya@upacademysf.com		
Admissions director		Brittany Botta		
845-544-3964		Brittany@upacademysf.com		
Total enrollment 21		Teachers and aides per class 1		
Grade levels TK - 5				
Class size	Pre-K 10	Kindergarten 10	Upper grades 10	
Hours	Pre-K 8:45-3:00	Kindergarten 8:45-3:00	Upper grades 8:45-3:00	
Before/after care	3:15-5:30			
Tuition	Pre-K \$29,950	Kindergarten \$29,950	Upper grades \$29,950	
Financial aid	Yes			
Admissions deadline	Rolling Admissions			
Open house	October 26, 2024 January 11, 2025			
Mission statement	We empower students of all abilities to strengthen their community, realize the power of their ideas, and influence action in the world.			

Ventana School			Parent Notes
<i>Address</i>	1040 Border Road, Los Altos, CA 94024		
<i>Website</i>	https://www.ventanaschool.org/		
<i>Head of school</i>	Amanda Stewart		
(650) 948-2121	amandas@ventanaschool.org		
<i>Admissions director</i>	CJ Liu		
(650) 948-2121	admissions@ventanaschool.org		
<i>Total enrollment</i> 163	<i>Teachers and aides per class</i> 2-3		
<i>Grade levels</i> Preschool 2 years old through Pre-K, Kindergarten through Fifth Grade.			
<i>Class size</i>	<i>Pre-K</i> 18	<i>Kindergarten</i> 15-24	<i>Upper grades</i> 15-24
<i>Hours</i>	<i>Pre-K</i> 9:00am - 3:00pm	<i>Kindergarten</i> 8:30am - 3:00pm	<i>Upper grades</i> 8:30am - 3:00pm
<i>Before/after care</i>	Early care: 8:00am After Care: 3:00pm - 5:30pm		
<i>Tuition</i>	<i>Pre-K</i> \$14,000-\$32,350	<i>Kindergarten</i> \$34,500	<i>Upper grades</i> \$34,500
<i>Financial aid</i>	Yes		
<i>Admissions deadline</i>	January 22, 2025		
<i>Open house</i>	Open House: Nov 2nd & Dec 7th. School Tours are offered weekly from Oct 2024-Jan 2025		
<i>Mission statement</i>	Our belief in the infinite potential of the confident, curious children ignites their belief in themselves.		

Waldorf School of the Peninsula			Parent Notes
<i>Address</i>	11311 Mora Drive, Los Altos Hills, CA 94024		
<i>Website</i>	www.waldorfpeninsula.org/		
<i>Head of school</i>	Dr. Jon Herzenberg		
650-209-9400	jon.herzenberg@waldorfpeninsula.org		
<i>Admissions director</i>	Ashley Brickeen		
650-209-9404	admissions@waldorfpeninsula.org		
<i>Total enrollment</i> 300	<i>Teachers and aides per class</i> 2: N-3rd, 1: 4-5		
<i>Grade levels</i> Nursery School through 12th grade			
<i>Class size</i>	<i>Pre-K</i> 18	<i>Kindergarten</i> 18	<i>Upper grades</i> 24
<i>Hours</i>	<i>Pre-K</i> 8:30-2:45	<i>Kindergarten</i> 8:30-2:45	<i>Upper grades</i> 8:30-2:45
<i>Before/after care</i>	Extended Care is available Nursery School- Grades 5 every school day and some vacation days until 5:45 pm		
<i>Tuition</i>	<i>Pre-K</i> \$34,925	<i>Kindergarten</i> \$34,925	<i>Upper grades</i> \$36,925-\$49,125
<i>Financial aid</i>	Yes		
<i>Admissions deadline</i>	NS/K: 1/10/25; Otherwise, rolling admissions until filled.		
<i>Open house</i>	Windows on Waldorf Saturday, October 5, 2024 Early Childhood Open House Saturday, October 19, 2024 Annual Winter Faire Saturday, December 7, 2024. Early Childhood Spring Open House Saturday, April 26, 2025		
<i>Mission statement</i>	WSP offers a constantly renewing, 100-year-old, humanistic education that is taught at more than 1,100 schools worldwide. We teach with intention. Our learning environment invites students to engage in a vibrant curriculum comprising academics, arts, nature and athletics to support their healthy development and build a strong foundation for success. Waldorf graduates pursue fulfilling careers in science, technology, health, and education, and earn Phds at a higher rate than the national average for independent schools.		

Woodland School			Parent Notes
<i>Address</i>	360 La Cuesta Drive, Portola Valley, CA 94066		
<i>Website</i>	woodland-school.org		
<i>Head of school</i>	Jennifer Warren		
(650) 285-5229	admissions@woodland-school.org		
<i>Admissions director</i>	Melanie Rothenberg		
(650) 285-5229	mrothenberg@woodland-school.org		
<i>Total enrollment</i> 305	<i>Teachers and aides per class</i> 1		
<i>Grade levels</i> PS-8			
<i>Class size</i>	<i>Pre-K</i> 12	<i>Kindergarten</i> 16	<i>Upper grades</i> 16-18
<i>Hours</i>	<i>Pre-K</i> 8:30-3:30	<i>Kindergarten</i> 8:15-3pm	<i>Upper grades</i> 8:15-3:15
<i>Before/after care</i>	7:30-6:00pm		
<i>Tuition</i>	<i>Pre-K</i> \$34,450	<i>Kindergarten</i> \$39,050	<i>Upper grades</i> \$41,250
<i>Financial aid</i>	Yes		
<i>Admissions deadline</i>	1/15/2025		
<i>Open house</i>	11/2/2024		
<i>Mission statement</i>	Woodland School develops collaborative, creative, and confident learners with the strength of voice to follow their hearts and make a difference.		

Wornick Jewish Day School				Parent Notes
Address		800 Foster City Blvd, Foster City, CA 94404		
Website		wornickjds.org		
Head of school		Adam Eilath		
(650) 378-2600		aeilath@wornickjds.org		
Admissions director		Annie O'Donnell		
(650) 378-2611		aodonnell@wornickjds.org		
Total enrollment 208		Teachers and aides per class 1-2		
Grade levels TK - 8				
Class size	Pre-K N/A	Kindergarten 14-16	Upper grades 18-20	
Hours	Pre-K N/A	Kindergarten 8:15am - 3:30pm	Upper grades 8:15am - 3:30pm	
Before/after care	7:30am - 8:15am; 3:30-6pm			
Tuition	Pre-K N/A	Kindergarten \$34,800	Upper grades \$35,590	
Financial aid	Yes			
Admissions deadline	January 17, 2025			
Open house	November 3, 2024, 10am -12:30pm			
Mission statement	Ronald C. Wornick Jewish Day School develops students who are socially and academically prepared to meet their full potential as engaged leaders committed to a life steeped in Jewish ethics and values.			

Yavneh Day School				Parent Notes
Address		14855 Oka Road, Ste,100, Los Gatos, CA 95032		
Website		www.yavnehdayschool.org		
Head of school		Aviva Greenberg		
(408) 357-7524		admissions@yavnehdayschool.org		
Admissions director		Lauren Carlinsky		
(408) 357-7524		admissions@yavnehdayschool.org		
Total enrollment 134		Teachers and aides per class Varies		
Grade levels K - 8				
Class size	Pre-K N/A	Kindergarten Max 18/class	Upper grades 16	
Hours	Pre-K N/A	Kindergarten 8:15am-3:30pm	Upper grades 8:15am-3:30pm	
Before/after care	7:45am-8:15am, and aftercare until 5:30pm			
Tuition	Pre-K N/A	Kindergarten \$26,000	Upper grades \$26,000	
Financial aid	Yes			
Admissions deadline	Applications are due 2/28/25			
Open house	October 29th 8:30am-10:00am, November 13th 5:30pm-6:30pm (Middle School Experience Panel), November 13th 7-8pm (Kindergarten Open House for Prospective Parents), December 20th 1-2pm, January 22nd 4:30pm-6:00pm (All School Open House)			
Mission statement	Yavneh Day School is committed to academic excellence in General and Jewish studies within a strong, vibrant community where each child is celebrated and challenged. A Yavneh education is about discovering how a child learns in order to maximize each student's potential while promoting curiosity, encouraging risk taking, and fostering a love of learning.			

Yew Chung International School Silicon Valley			Parent Notes
Address	310 Easy Street or 199 E. Middlefield Rd, Mt.View, CA 94043		
Website	www.ycis-sv.com		
Head of school	Kevin Reimer		
(650) 903-0986	kevinr@sv.ycef.com		
Admissions director	Alice Huang		
(650) 903-0986	aliceh@sv.ycef.com		
Total enrollment 245	Teachers and aides per class 3 per Preschool & TK class; 2 per Kinder to Grade 8 class		
Grade levels Preschool (Age 2) to Grade 8			
Class size	Pre-K 16-22	Kindergarten 20	Upper grades 24
Hours	Pre-K 8am - 6pm	Kindergarten 8:15am - 3:15pm	Upper grades 8:15am - 3:15pm
Before/after care	3:15 to 6pm		
Tuition	Pre-K \$35,150	Kindergarten \$33,000-\$37,950	Upper grades \$33,000-\$37,950
Financial aid	Yes, from TK to Grade 8		
Admissions deadline	Jan 31st, 2025		
Open house	November 2nd and December 14th: - Kindergarten to Grade 8 from 2:00pm to 4:00pm - ECE (Preschool & TK) from 9:30am to 11:30am		
Mission statement	Yew Chung International School Silicon Valley is committed to aligning with – Science and Technology – Culture and Arts – Love and Charity.		



Center for Children and Youth
A DIVISION OF JEWISH FAMILY AND CHILDREN'S SERVICES

World-class services for families. A vision for a better future.

We offer in-person and remote clinical services, parenting resources, and more to guide families through the everyday and the extraordinary.

Dedicated Professionals

Through a deep understanding of the complex challenges that families face, we offer tailored support for every family. Our experienced team includes licensed child psychologists, child and adolescent psychiatrists, clinical social workers, occupational therapists, parent coaches and educators, and marriage and family therapists.

Parents Place

For over 40 years, Parents Place has been guiding parents on their journey. Our comprehensive approach to parent education and coaching has been the model for more than 200 parenting programs across the U.S. and internationally. We're proud to have been featured in Parents Magazine, Family Fun, Working Woman, Christian Science Monitor, and Young Children, as well as on the Today Show and on local television and radio.

Parent Coaching and Consultations

We believe that parenting is the most important job you can do, and we know that it is full of both joy and challenges. Our parent coaches work one-on-one with families to provide guidance and strategies for all ages and all kinds of issues. When we work together, we help you identify your parenting goals and desired areas of change so that we can build a roadmap that is right for you and your family.



We Can Help With:

- Sleep & Healthy Routines
- Toilet Learning
- Developmental Concerns
- Behavior & Positive Discipline
- Limit Setting
- Sibling Rivalry
- Highly Sensitive Children
- Resiliency & Coping Skills
- Depression and Anxiety
- ADHD & Impulse Control
- Children with Special Needs
- Parenting as a Couple
- Separation & Divorce
- Choosing a School
- Learning Challenges
- Social & Emotional Development
- Post-Adoption Support

Call Us Today!

1-888-927-0839





"I am so grateful we found the Center for Children and Youth. Our daughter is a new child—happy, learning, and self-assured. She has friends!! Your team was forever kind, calm, and non-judgmental."

Schedule a consultation

Our warm and knowledgeable team will connect you with the support you need.

415-359-2443
650-688-3046
888-927-0839
ccyintake@jfcs.org



Center for
Children
and Youth

Parenting Workshops

Our interactive parenting workshops are available online and at locations across the Bay Area. Join us to connect with other parents, receive support, share your experiences, and get expert guidance from our parent educators on a wide variety of topics.

Parent Support Groups

Connect with other parents and express your feelings in a safe, nonjudgmental environment. Join our circle of sharing facilitated by our parent educators and therapists to help you and your family thrive.

Comprehensive Services for Children and Teens

- Child and Family Therapy
- Assessments and Evaluations
- Occupational Therapy
- Child and Adolescent Psychiatry
- School Observations & Learning
- Special Needs

Therapeutic and Clinical Services

Our mental health services include individual and family therapies, psychiatry, and occupational therapy. We use diverse strategies including child-parent psychotherapy, cognitive behavioral therapy, attachment-based and trauma-specific treatment, and social emotional learning to address each child's unique strengths and challenges.

Drop-in Play for Parents with Children Aged 0 – 5

Join us in our fun, state-of-the-art, and stimulating playrooms for two hours of interactive play with your child! A playroom facilitator will be on hand to provide helpful tips and guidance. Our playrooms are open to parents and caregivers with children five years and under. Drop-in Play is available twice weekly at our San Mateo and Palo Alto centers. Pre-registration is optional, see website for details.





Center for
Children
and Youth

ParentsPlace



Parent Consultations and Coaching

Because kids don't come with instructions ...

Getting expert advice for parenting challenges can be an enormous help to address behavior and discipline issues, limit setting, school challenges, screen time battles, sleep issues, toilet learning, and much more.

Through a deep understanding of the complex challenges that children face, our interdisciplinary team creates tailored support for every family. Get advice and strategies for all ages from our professional staff, including the tools and roadmap to choose the path that is right for you and your family.

We believe that parenting is the most important job you can do, and our parenting experts give you tools, resources, and support to guide you on your journey.

Schedule your consultation today!
ccyintake@jfcs.org

"You listened to our history, asked questions to get a sense of our parenting style and family dynamics, and then proceeded to make the best recommendation we ever heard. Thank you for helping us see our potential! It's making a big difference for our three boys."

We're Here to Help!

415-359-2443

650-688-3046

1-888-927-0839

centerforchildrenandyouth.org

PARENTS PLACE IS A PROGRAM OF THE CENTER FOR CHILDREN AND YOUTH,
A DIVISION OF JEWISH FAMILY AND CHILDREN'S SERVICES.



Meet Our Expert Parent Coaches

If you have questions about your child's development, interactions, or behavior, the Center for Children and Youth can help. Our experienced parent coaches provide tools, resources, and support to guide you through any parenting challenge. We offer individual parent and family consultations, virtually or in-person, and can also observe children at school or home to gain further understanding.



Elisa Magidoff, MA
Director of Parents Place

Elisa has been working in the field of early child care and education since 2000. Her experience includes executive management of a nonprofit serving children in preschool through elementary, directing inclusive preschools and private programs, as well as teaching in early childhood settings. From 2009 – 2022, Elisa taught Early Childhood and Adolescent Development courses in higher education at California Community and State Colleges. Elisa enjoys walking near the ocean and cooking.



Stephanie Agnew, BA
Assistant Director, Parents Place; Parent Coach

Stephanie has been working with early childhood educators and parents for over 30 years. Her specialties include kindergarten readiness, preschool and elementary school choice, temperament, positive discipline, preschool behavioral observations and teacher support. She coordinates all the Parents Place programs in The Center for Children and Youth.



Diana Blank, LCSW, Parent Coach

Diana is a therapist and social worker who specializes in supporting families going through separation and/or divorce, as well as families who have children with disabilities. She teaches workshops about how to recognize the signs of Autism, in addition to facilitating our bi-weekly Single Parent Support Group.



YuFang Chien, MA, Teacher Trainer and Preschool Consultant

Since 2005, YuFang has devoted her career to Inclusive Early Childhood Education, working with families and young children across all abilities. Her expertise encompasses creating inclusive, equitable, and trauma-responsive learning environments that foster healthy classroom dynamics.

**SCHEDULE A
CONSULTATION**
ccyintake@jfcs.org
650-688-3046

*All services are strictly confidential.
Sliding scale fee available.*

GET HELP WITH ...

Prenatal, Infants, Toddlers

- Sleeping, Eating, and Toileting Challenges
- Establishing Healthy Routines
- Returning to Work

Challenging Behaviors

- Discipline and Limit Setting
- Managing Strong Emotions
- Child and Parent Anger

Social/Emotional Learning

- Sensitive and Spirited Children
- Separation Anxiety
- Friendships and Social Skills

School Success

- Evaluating School Options
- Classroom Observation/Support
- Kindergarten Readiness



“The Center for Children and Youth has been so amazingly beneficial for myself, my son, and my entire family. They clearly know what they’re talking about in terms of child development.”

SCHEDULE A CONSULTATION

650-688-3046

ccyintake@jfcs.org

*All services are strictly confidential.
Sliding scale fee available.*



Karen Friedland-Brown, MA, Parent Coach

A child development specialist and longtime parent educator, Karen specializes in temperament, discipline and limit setting, school issues, parenting as a couple, co-parenting through divorce, raising an only child, and parenting boys.



Lori Longo, MA, Parent Coach

A parent educator for more than two decades, Lori specializes in child development, discipline, separation issues, toileting, and twin challenges. Lori has seven grandchildren, and provides consultations for grandparents, in addition to leading grandparenting discussion groups. She was a teacher and director at parent cooperative preschools for more than 20 years.



Lauren Meltzer, MA, CLC, Parent Coach

Lauren is the mother of a 14-year-old 2E daughter. She is the co-founder of Parent Resource Advisors, a consulting firm supporting parents in raising neurodiverse or gender expansive children, and Loving Your Highly Sensitive Child, an educational resource for parents and teachers. She is a certified Life Coach and received a master’s degree in Education from Harvard University.



Sheila Norman, MA, Parent Coach

Sheila Norman, MA is adjunct faculty at City College of San Francisco and a lecturer for San Francisco State University. Prior to working in higher education, Sheila owned and directed a private San Francisco preschool for 18 years, supporting many children asked to leave other programs. Mrs. Norman is a certified trainer for the Program for Infant Toddler Care (PITC). She is a private consultant, trainer, and mentor. Sheila is the mother of three children and has 3 grandchildren.



Rachel Sklar, MSW, Parent Coach

Rachel customizes each consultation to the individual strengths and challenges of every family. She is a PCI-Certified Parent Coach, supporting parents on a wide range of topics including: discipline, sibling rivalry, raising boys, mindful parenting, and healthy use of technology.



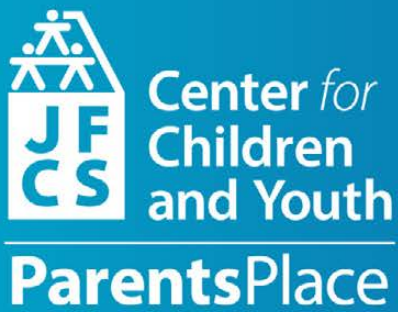
Elisabeth Stitt, BA, Parent Coach

After 25 years of teaching, Elisabeth switched to parent coaching and parent education, in order to help parents who felt isolated and overwhelmed. Her book, *Parenting as a Second Language*, addresses the importance of developing clear expectations, being consistent, and approaching big feelings with empathy.



Jenny Ward, MFA, Parent Coach

Jenny is a wellness coach, specializing in parenting and play, mindfulness and meditation, high conflict separation and divorce, and a licensed yoga educator with a focus on yoga therapy and family yoga. She also wrote the books *Who Said So? 101 Ways to Play* and *Who Said So? About Parenting*.



Join the Fun at Drop-in Play!

Bring your little one to our state-of-the-art playrooms in Palo Alto and San Mateo for two hours of interactive play, guided by our skilled facilitator.



Fee: \$10 per family



San Mateo



Palo Alto

Scan QR codes for details and to pre-register, or just drop in!



Independent Schools Of The San Francisco Bay Area



<https://www.issfba.org>



At the heart of New York Life is a commitment to be there for our customers when they need us—whether today or decades into the future. Since 1845, New York Life has delivered on that promise by investing wisely, managing finances strategically, and remaining true to our mission as a mutual company.



Secure Your Child's Future with
a Lifetime of Financial Security

Love Takes Action

-Your Love, Our Commitment

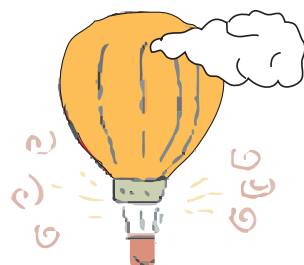
You've always taken care of your family's needs with love and dedication. Now, you can translate that love into concrete action by securing a financial policy that's tailored to your specific needs. Preserve the future of the ones you love - whether it's securing a life insurance policy, saving for education, planning your retirement, or safeguarding your estate.

With a policy from New York Life, you may enjoy peace of mind knowing that your loved ones are protected and set up for success, regardless of life's twists and turns.

Before you know it, the future will be today. The time is now to act on your love.

Contact your local agent:
Pengfei Li (CA Insurance License#: 4370406) / Cell: (669)-224-0307 / Email: plio5@ft.newyorklife.com

New York Life Insurance Company
550 S Winchester Blvd #405, San Jose, CA 95128



Peninsula

PEDIATRIC DENTISTRY



Brian C. Quo DDS, MS

882-Emerson St.
Palo Alto, CA 94303
650-853-8883
info@pedoquo.com

Board Certified Pediatric Dentist

Thank you for attending our 2024 Fair!

Lead Sponsors



Co-Sponsors



Community Sponsor



Center for
Children
and Youth

ParentsPlace

200 Channing Avenue
Palo Alto, CA
650-688-3040

2001 Winward Way
San Mateo, CA
650-931-1840

parentsplacepeninsula@jfcs.org

centerforchildrenandyouth.org